



Social Welfare Responses and Role in the with/post-Covid 19 era

- New Normal and Welfare Technology

Jung-won Lim, PhD

Professor

College of Social Welfare, Kangnam University





Index



- ▶ New Normal Era in Post-Covid 19
- ▶ The Field in Social Welfare and Covid 19 era
- ▶ The Innovation of Social Services by Welfare Technology
- ▶ The Role of Welfare Technology in Social Welfare



What is Social Solidarity in Korea?

- ▶ A welfare state is a nation which has a responsibility for the quality of life for all peoples
- ▶ At the center of a welfare state, social solidarity exist.
 - ▶ Respect for people
 - ▶ Dignity for people
- ▶ To be a welfare state is to change the paradigm which is accompanied by principles and values for all people
 - ▶ It is possible when social solidarity exists



Covid 19

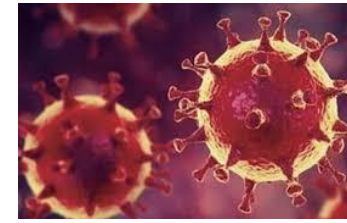


Figure 2. Number of confirmed COVID-19 cases, by date of report and WHO region, 30 December 2019 through 07 June 2020**

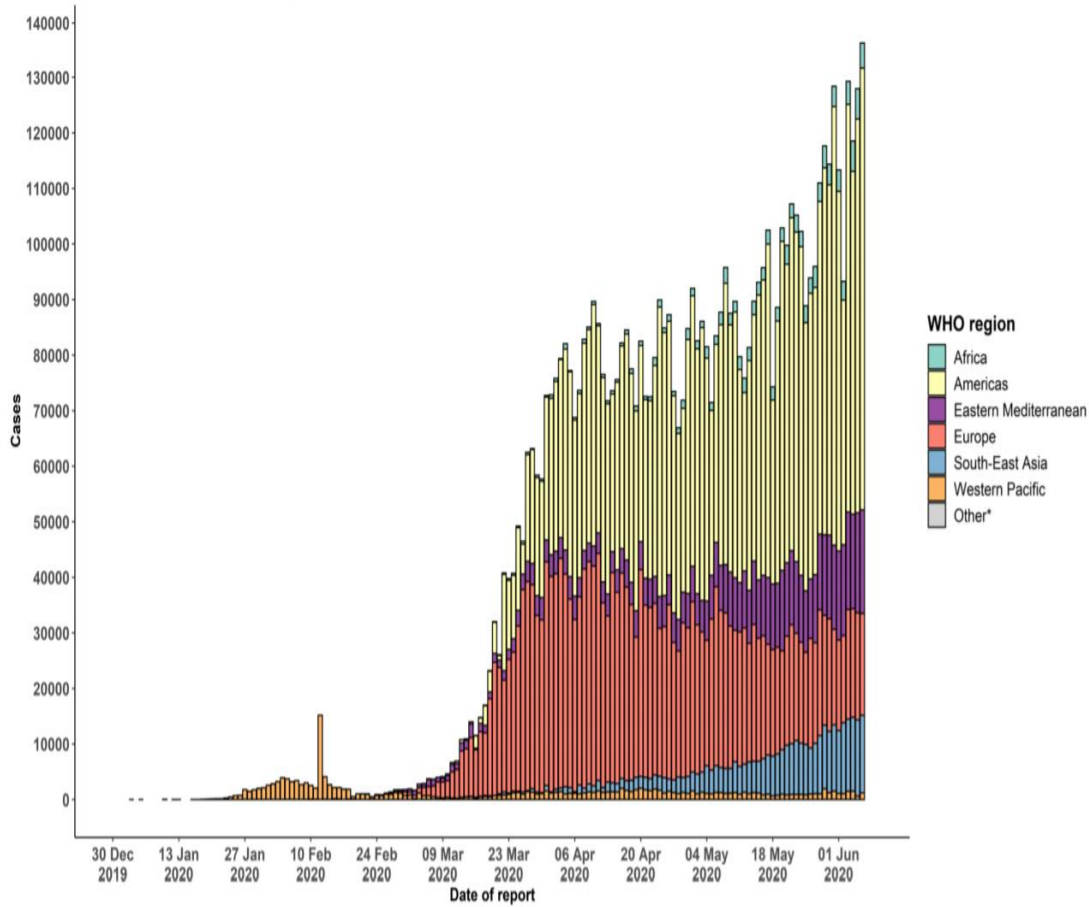
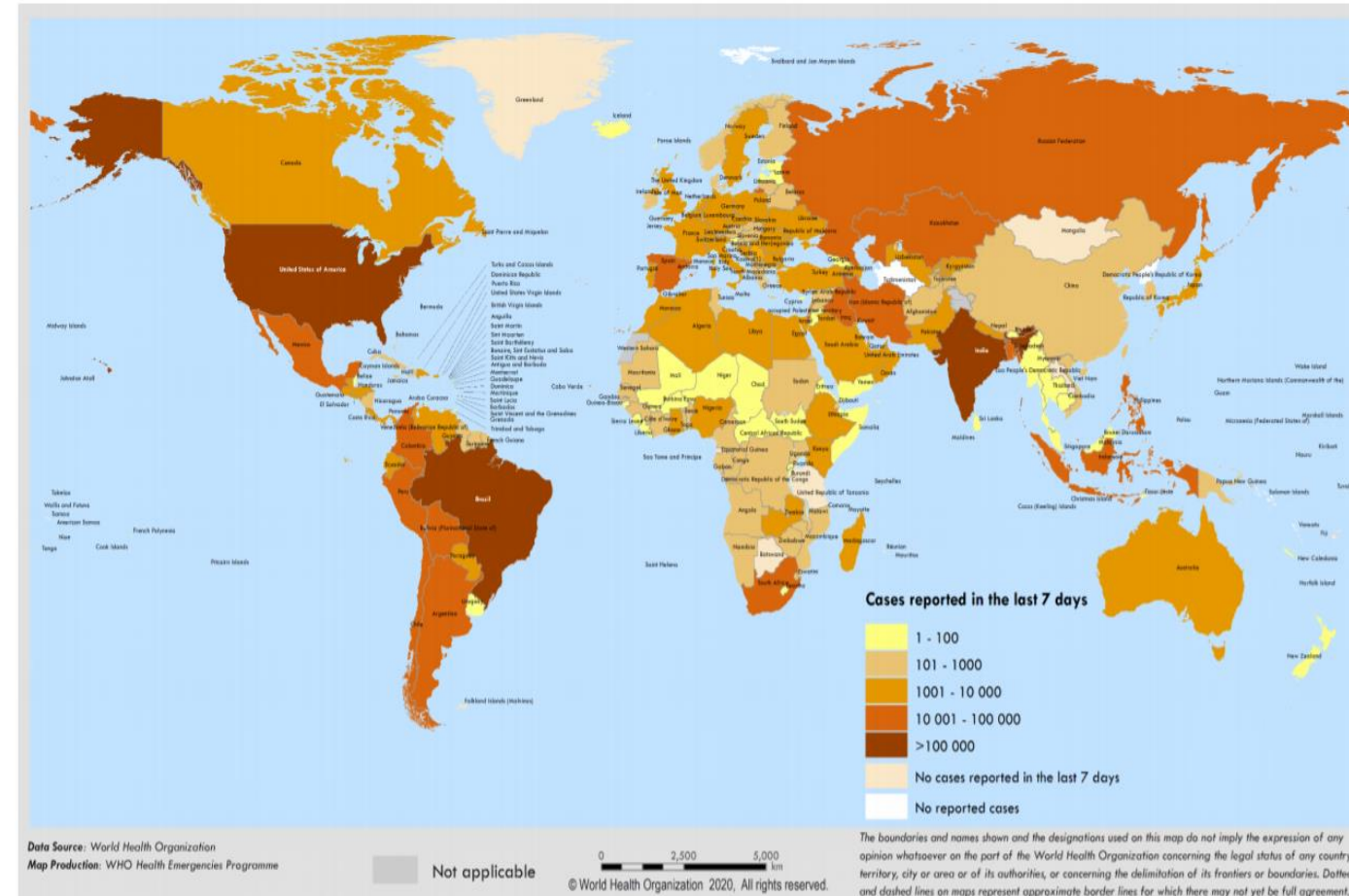


Figure 2. Number of confirmed* COVID-19 cases reported in the last seven days by country, territory or area, 4 August to 10 August **



New Normal Era in Post-Covid 19

New Normal – a condition, behavior, or state of things that is atypical but then becomes baseline casting a long-lasting effect

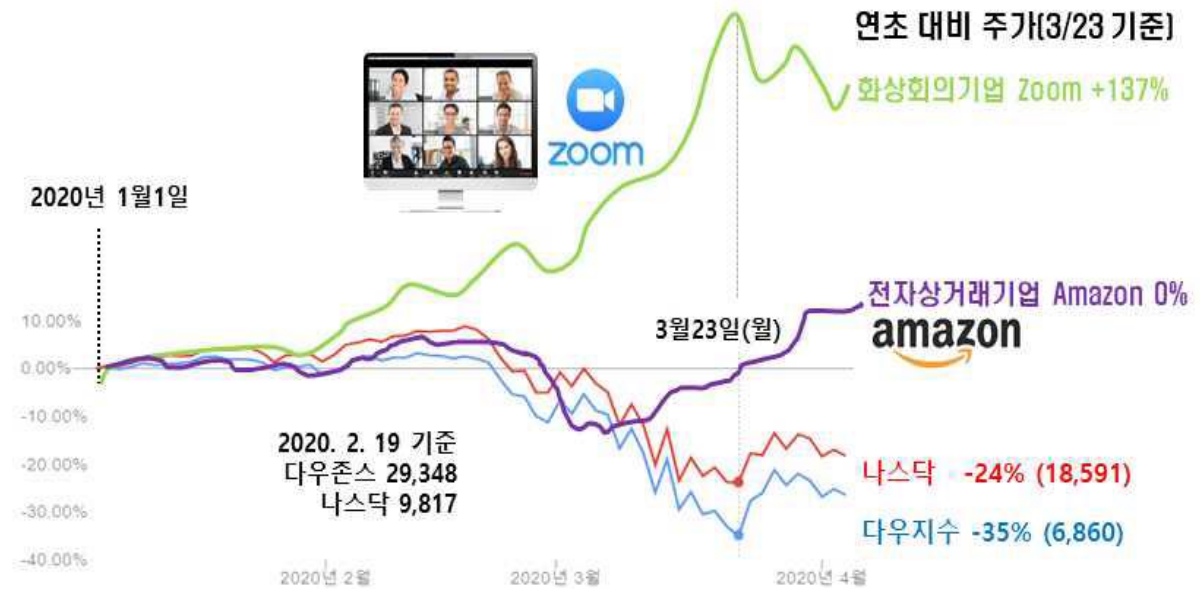
- **Accelerating untact and online services**
 - After Covid 19, putting online according to changes from conventional contact services to untact services
 - Individualization and digital trends using ICT
- **Building a home-centered ecosystem due to deglobalization**
 - Changing from perspective that values efficiency using international division of labor to perspective that values supply stability to protect national disasters

○ ○ ○ Rising New Industries in New Normal Era 1 ○ ○ ○

- **Rising online services and distribution**
 - Generalization of untact services using ICT and AI technologies
- **Rising digital content industries using ICT**
 - Growth of online video service industries
 - Preferences of online streaming platform that can enjoy contents such as movie, drama in the single room
- **Enlargement of remote treatment and growth of smart healthcare services**
 - Untact service, that is remote treatment can be active in earnest
 - The paradigm of healthcare industries can be changed from treatment- to prevention and diagnosis-centered issues
 - Smart healthcare industries such as AR and VR have been growing

Rising New Industries in New Normal Era 2

- The fast-growth of edu-tech and video conferences related industries
 - The aggressive use of E-learning tools such as AI, AR, VR, IoT for obtaining effective education contents
 - Video conference




The Covid 19 pandemic has influenced social solidarity?



Obstacles to Hinder Efficiency in Social Work Field in the Covid 19

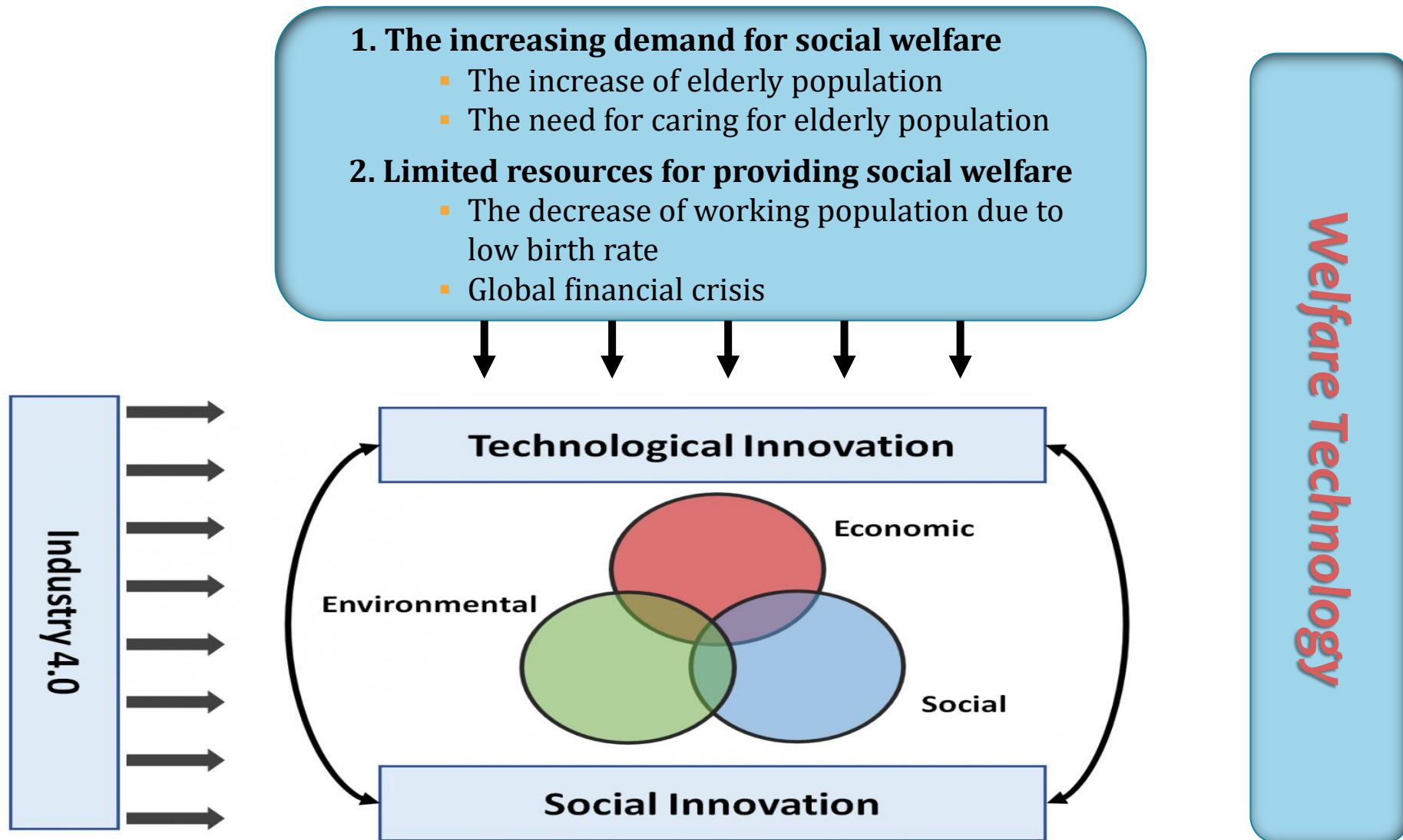


- **Inefficiency of services by direct and contact services with clients**
 - **The lack of applying to service systems for enforcing clients' participation**
 - Low accessibility to social work related information
 - Provider centered information and service provision
 - **Occurrence of service gaps due to excessive administrative work**
- 

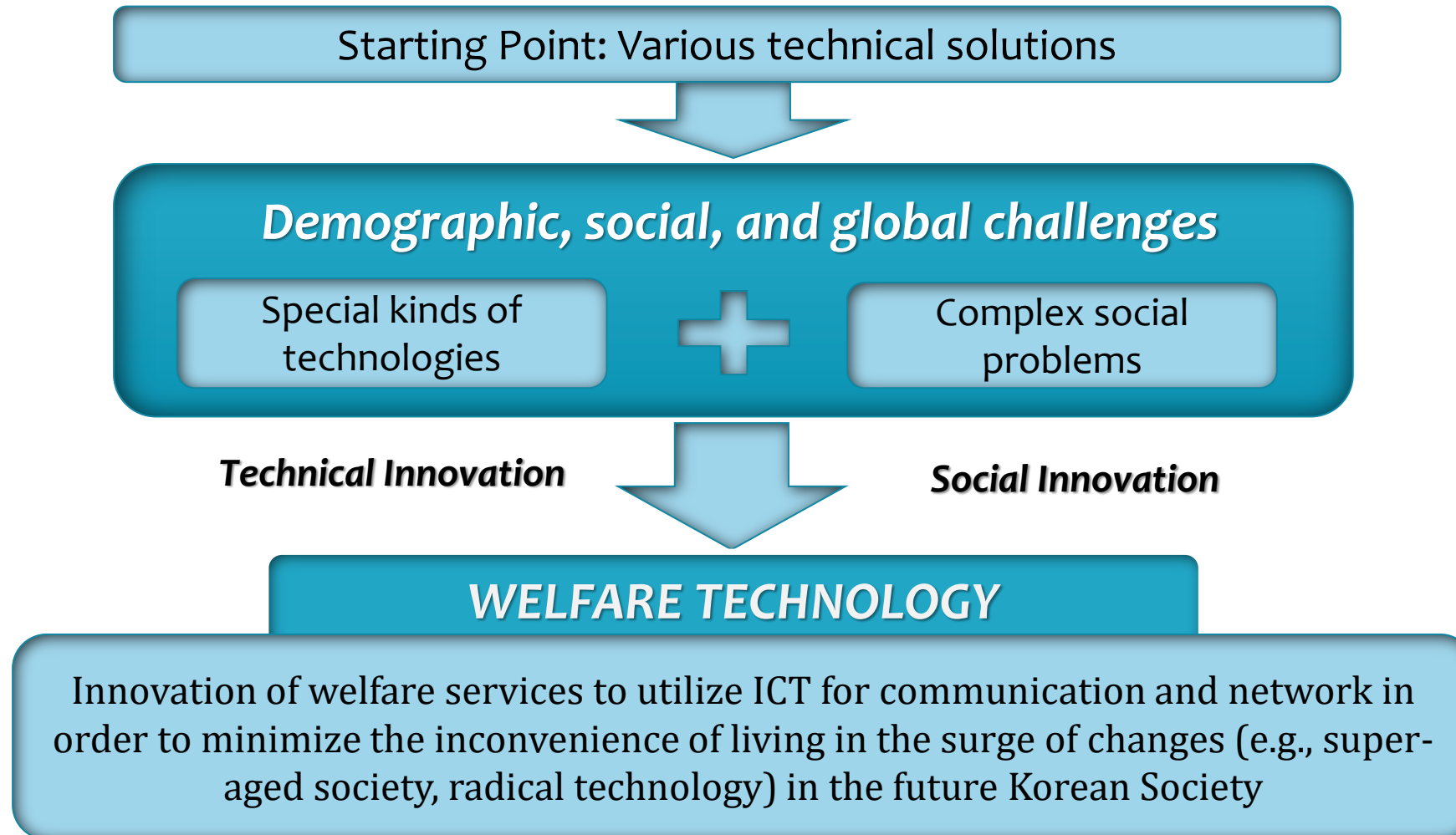
The Condition for Settling for the New Normal Era

1. Establish plan B instead of pausing services in the situation of a lack of understanding of predictability and sustainability of Covid 19
 - ▶ How we can improve social solidarity? Which methods?
2. Increase untact services and digital capacity
 - ▶ Reinforcing digital capacities in social service fields
 - ▶ Developing skills and education considering the increase of social solidarity
3. Change large-scale to small-scale facilities
 - ▶ Build small community system based on strong network
 - ▶ Increase community capacities which are small but strong

Changing Society and Welfare Technology



What is Welfare Technology?





Welfare Technology in Post Covid 19



- ▶ **Skills for providing personalized integrative services based on contact tools**
 - ▶ Preemptive responses for clients who utilize social welfare agencies by monitoring physical and mental health
 - ▶ Providing diverse kinds of welfare services by providing information related online based emergency and social welfare
 - ▶ Increasing quality of life for educating capacities which can solve themselves and find adequate social welfare services based on clients' needs and situations
 - ▶ Increase opportunities which can solve social problems by matching services that correlate clients in the community



Welfare Technology in Post Covid 19

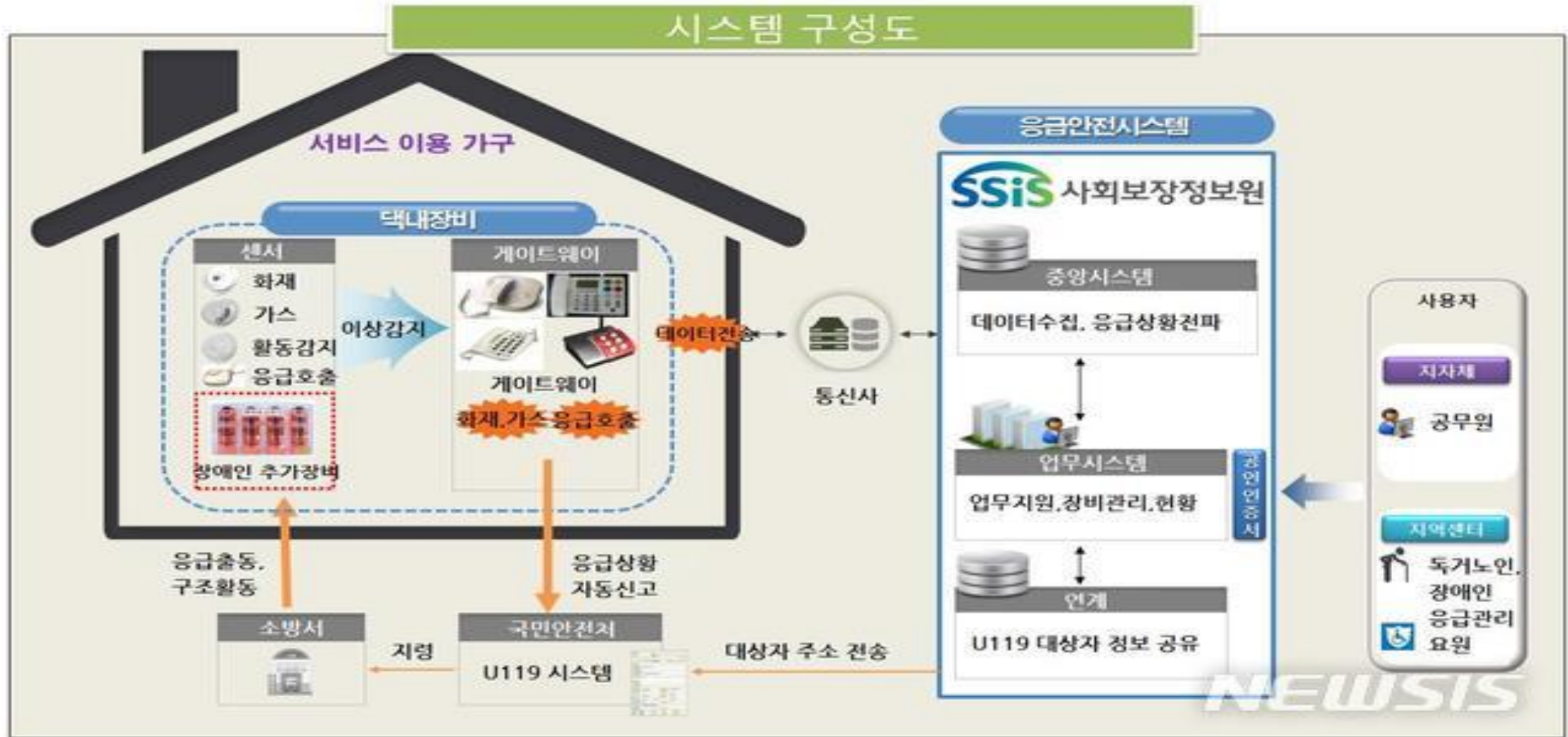
- ▶ **Build welfare platform for solving problems for clients**
 - ▶ Prepare the base for providing services by hearing needs for clients and analyzing related information through welfare platform
- ▶ **Testing the effectiveness of services using Living lab**
 - ▶ Need of developing intelligent system and platform through participating by service providers and consumers; can increase social solidarity



WELFARE TECHNOLOGY IN SOCIAL WELFARE FILED : NOW AND FUTURE



Emergency and Safety Alarm Services for the Elderly living alone



Mental Health/ Prevention of Dementia Program



정신건강테스트-치매편 & 스트레스 편 & 우울증



- 시간 지남력 (총 5점) → 지남력 총 10점
- 장소 지남력 (총 5점)
- 기억력 (총 6점) → 기억 및 계산능력 총 11점
- 계산력 (총 5점)
- 이름 맞추기 (총 2점)
- 따라 말하기 (총 1점)
- 실행 능력 (총 3점)
- 구성 능력 (총 1점) → 이해 및 판단능력 총 9점
- 읽기 능력 (총 1점)
- 이해 판단 (총 1점)

총 30점



정신건강테스트와 엔브레인온
개인용 또는 기관용 제품으로 제공됩니다.
기관용의 경우, 웹에서 이용가능 합니다.



인지재활프로그램 엔브레인-앱, 패드, PC버전 / B2B, B2C



VR 콘텐츠
활용



치매 노인

인지재활
필요자

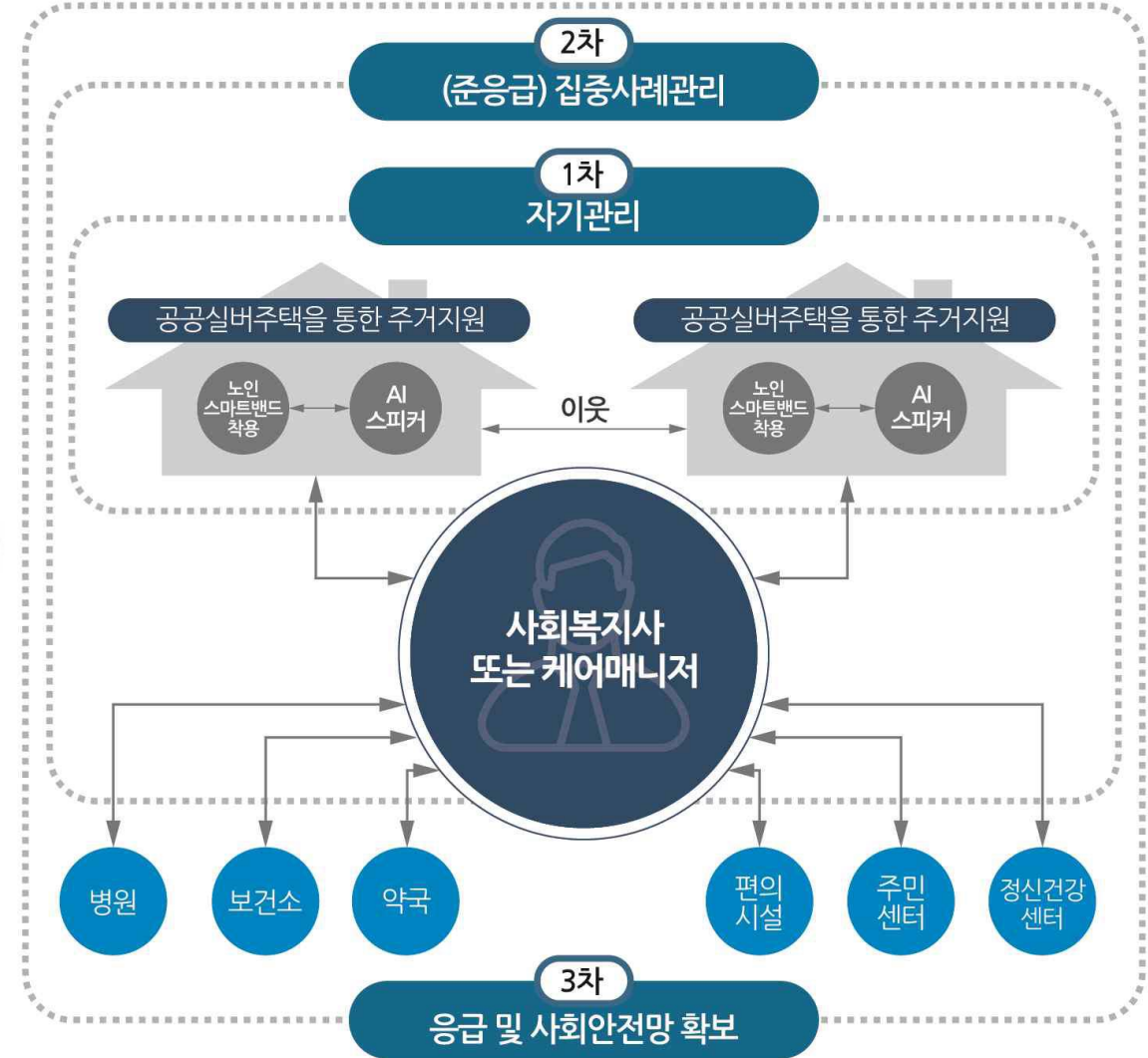


Cognitive/ Social
Functioning

Magic/Happy Table



Wel-Tech based Community Care Model



Living Lab

Wel-Tech Living Lab

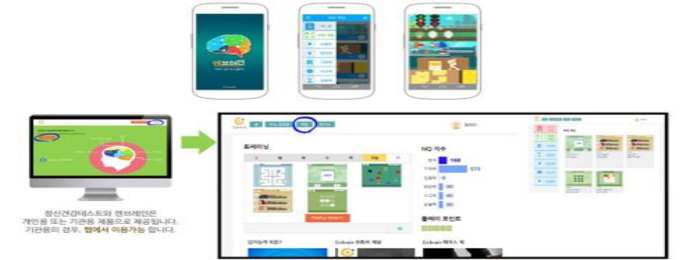
Government



Industry



인지재활프로그램 엔브레인-앱, 패드, PC버전 / B2B, B2C



Education




- The use of welfare technology for sustaining cognitive function for elderly population
- Cooperative system among government, education, and industry



What do Social Welfare do in the Post-Covid 19?



- ▶ Preemptive response to find blind areas in social welfare using welfare technology
 - ▶ Innovation of social services using welfare technology
 - ▶ Change in ineffective and inefficiency service delivery system
 - ▶ Online based sharing culture activities for recovering Covid 19
 - ▶ Developing and disseminating online and offline education program
 - ▶ Build monitoring and crisis management supporting system in social welfare agencies
 - ▶ Build collaborative systems among providers and consumers to increase social solidarity
- 

Thank You!!

